

# Made in Bolton

## Reset of Bolton Vision 2030 with our partners

### The Vision Reset - focus on delivery (One Borough)

**Vision:** how we want Bolton to feel and be

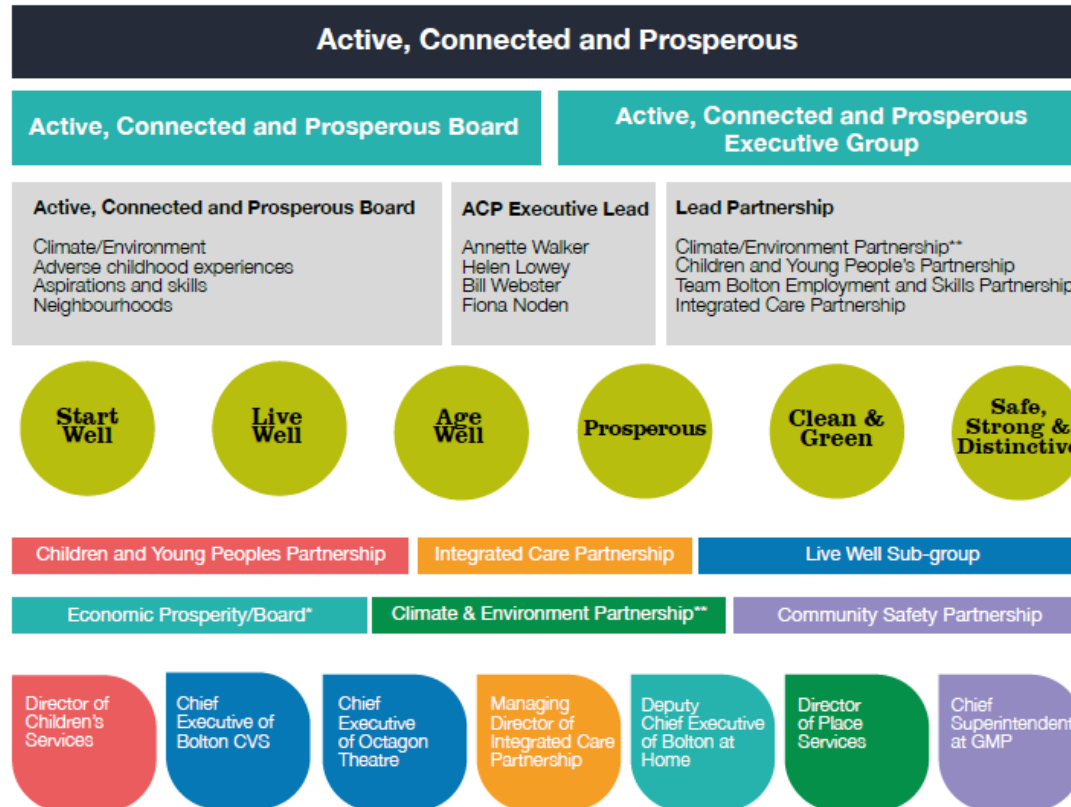
**Accountability:** a One Borough approach

**Whole Partnership Priority Programmes**

**Bolton 2030 outcomes:** single outcomes framework to support BRAIN

**Strategic Partnerships:** leading on delivery of Bolton 2030 outcomes

**ACP Executive/Bolton Council Director Leads**



Reflecting on progress and pandemic experience

Reconfirmed vision for an Active, Connected and Prosperous borough

The Council has increased its focus on place based leadership

Sharpened delivery focus on crucial issues and outcomes

# Our Vision

These six outcomes clearly articulate the Vision Partnership's ambitions for the Borough, setting out what we need to do to deliver a Bolton which future generations are proud to be part of.

We know that to be effective it must link to a programme of action on the ground, and that we need to be clearly focussed on how we deliver this programme.

The Vision has already achieved a great deal since its launch, and this strategy intends to build on these achievements to create a Bolton that is, Active, Connected and Prosperous.

## Underpinning the Vision are six outcomes for the borough:

### Start Well



Our children get the best possible start in life, so that they have every chance to succeed and be happy.

### Live Well



The happiness and wellbeing of our residents is improved, so that they can live healthy, fulfilling lives for longer.

### Age Well



Older people in Bolton stay healthier for longer, and feel more connected with their communities.

### Prosperous



Businesses want to work and invest in the borough and through their corporate social responsibility maximise social value opportunities, whilst creating good inclusive and sustained employment across the system.

### Clean and Green



Our environment is protected and improved, so that more people enjoy it, care for it and are active in it.

### Safe, strong and Distinctive



Stronger, cohesive, more confident communities in which people feel safe, welcome, and connected.

# Supporting a sharper focus

## A new Single Outcomes Framework

A Single Outcomes Framework that will promote delivery and accountability has been proposed. The Single Outcomes Framework will allow us to mark progress of the four whole partnership programmes referred to above.

Underpinning each of the outcomes are a series of strategic aims, providing concise and distinct objectives that will contribute to achieving the high

level Vision outcome. To measure progress against these, the Single Outcomes Framework will be used as the key monitoring and evaluation tool, providing a series of measurable to share. The Single Outcomes Framework will be supported by a regularly updated performance dashboard that will allow us to better track progress over time.

### Start Well



Children are ready to succeed at school and achieve at all key stages

Children are in attendance at good quality schools

Children are protected from harm allowing them to achieve their full potential

Children are healthy and in a good state of mental wellbeing

### Live Well



Our residents feel healthy and remain in good health with a good state of mental wellbeing

All residents have access to learning opportunities to improve their education and skills

Residents are in good quality jobs with more opportunities and apprenticeships available

### Age Well



Older people in Bolton are living well with good physical and mental health

Bolton is a place where people can age well with access to quality care and support available for those who need it

Carers in Bolton are supported and have a good state of wellbeing

### Prosperous



Bolton is an attractive place to live with affordable and high quality homes

Bolton is a great place to work, visit and invest, with a thriving economy

Bolton has good quality and accessible transport routes, connecting to boroughs regionally/nationally

Bolton has a strong digital offer

### Clean and Green



Air and land free from pollution and infrastructure that protects against climate change

Improve health equity to protect health and wellbeing and reduce inequalities for Bolton residents

Make best use of our assets, identifying areas that promotes environmental initiatives

### Safe, strong and Distinctive



Our residents feel connected and have access to creative, cultural and volunteering opportunities

People feel safe and live in harmony together with reduced crime and antisocial behaviour

Our residents feel that their voice is heard

# A whole partnership programme focus

---

A number of crucial issues have been identified that are seen to be urgent, that can only be delivered by the whole partnership working differently and through the support from our communities. These are:



## The Climate Emergency

Delivering our recently agreed Bolton Climate Strategy.



## Neighbourhoods

Joining up a range of work from across the partnership at the very local level.



## Aspirations and Skills

Ensuring our young people have the confidence and skills to contribute and thrive in the labour market and in life.



## Adverse Childhood Experiences

The partnership has accepted that this is a proven key driver of inequalities in later life.